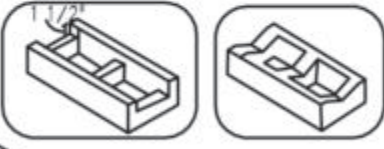
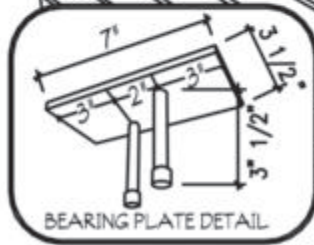
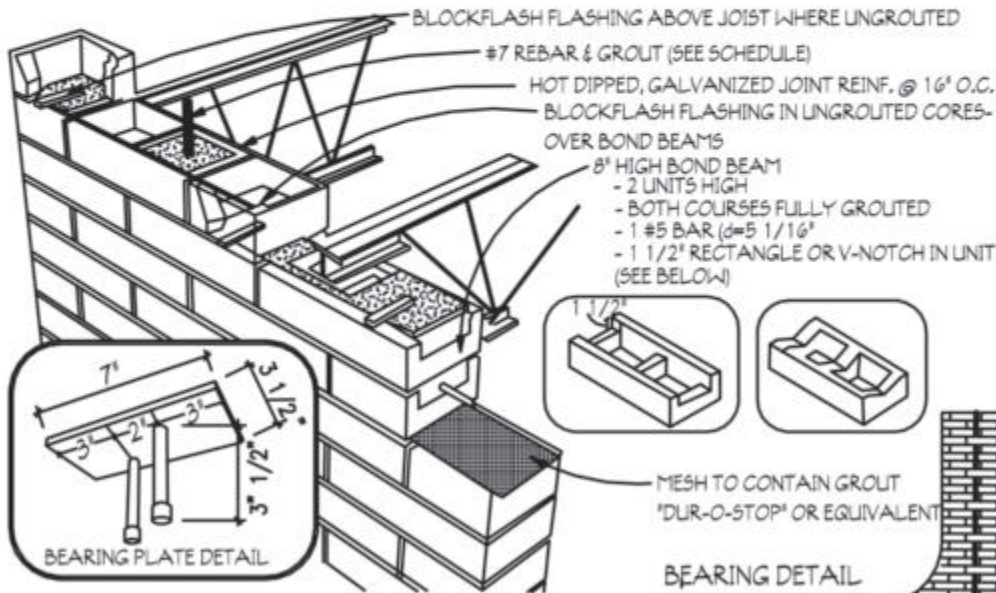


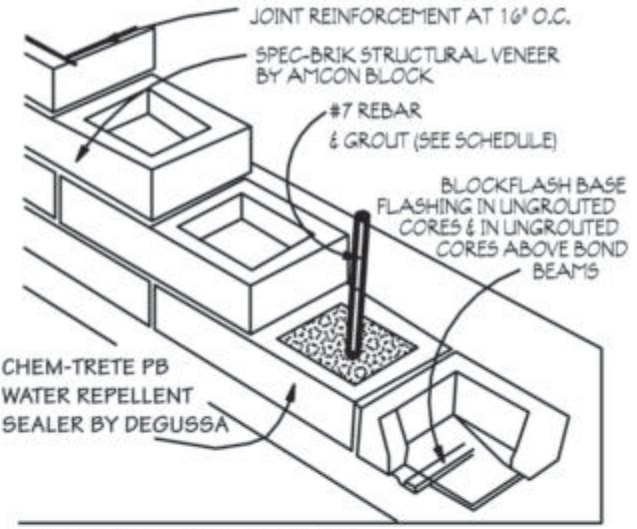


SPEC-BRIK SAMPLE DETAILS FOR SINGLE WYTHE WALLS

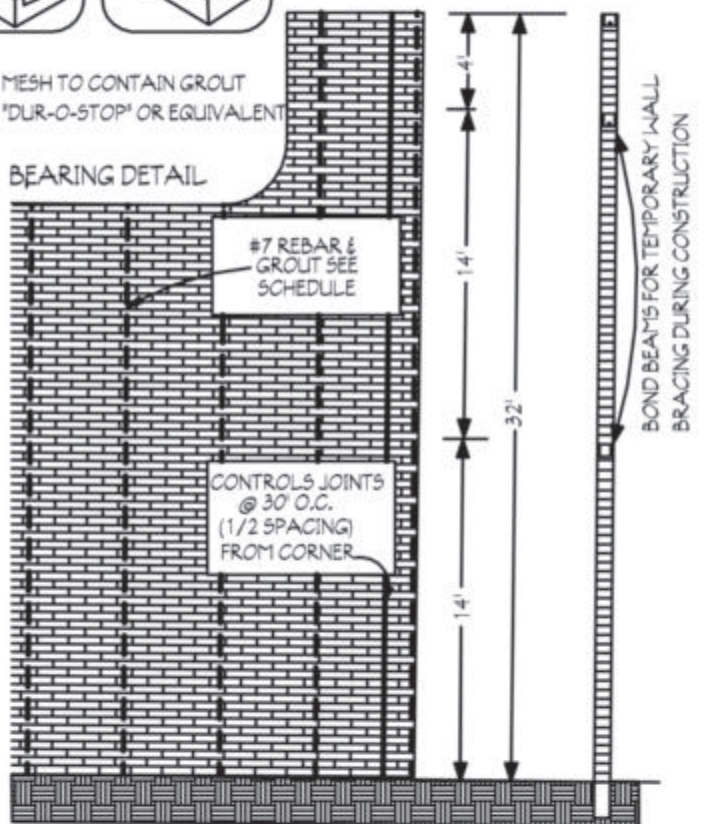


MESH TO CONTAIN GROUT "DUR-O-STOP" OR EQUIVALENT

BEARING DETAIL



BASE FLASHING DETAIL



Half-High Architectural CMU
7 5/8" (w) x 3 5/8" (h) x 15 5/8" (l)

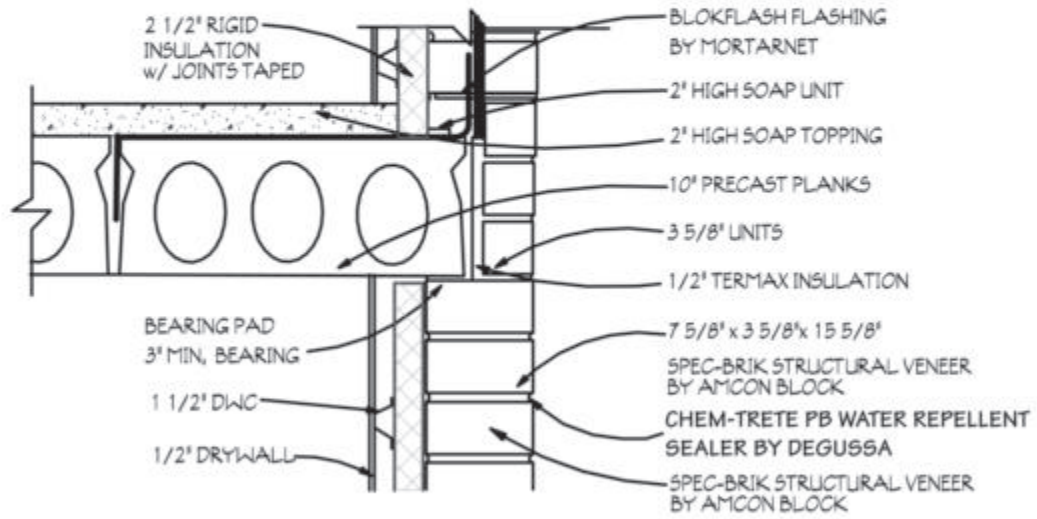
HALF HIGH CMU WITH RHEOPEL INTEGRAL WATER REPELANT BY BASF, AND INTREGAL WATER REPLENT MORTAR ADMIXTURE BY BASF

$f_m = 2250 \text{ psi}$

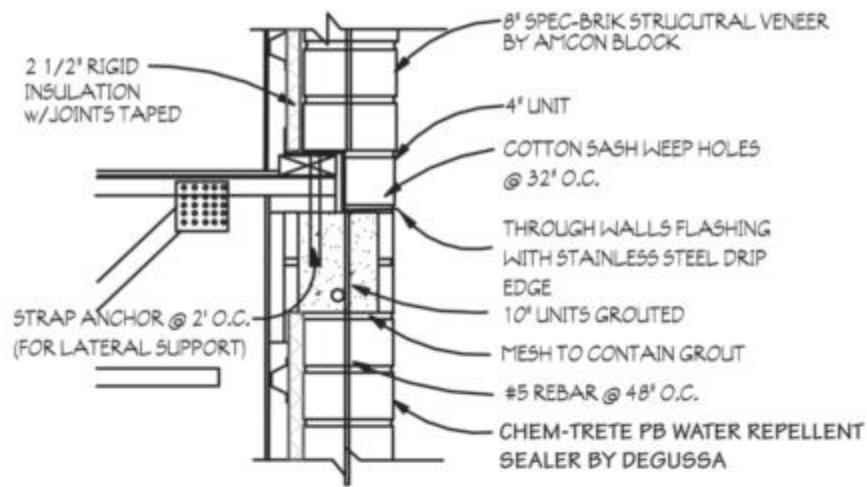
WALL HEIGHT	UNIT WIDTH	REINFORCING 20 PSF WIND	REINFORCING 15 PSF WIND
28'-0"	7 5/8"	#7 @ 24' O.C.	#7 @ 32' O.C.
32'-0"	9 5/8"	#7 @ 24' O.C.	#7 @ 32' O.C.
38'-0"	11 5/8"	#7 @ 16' O.C.	#7 @ 16' O.C.
42'-0"	13 5/8"	#7 @ 16' O.C.	#7 @ 16' O.C.

2002 WITH ASD WITH 1/3 STRESS INCREASE

SPEC-BRIK SAMPLE DETAILS FOR SINGLE WYTHE WALLS



EXTERIOR NON-BEARING WALL DETAIL - PRECAST HOLLOW CORE FLOORING



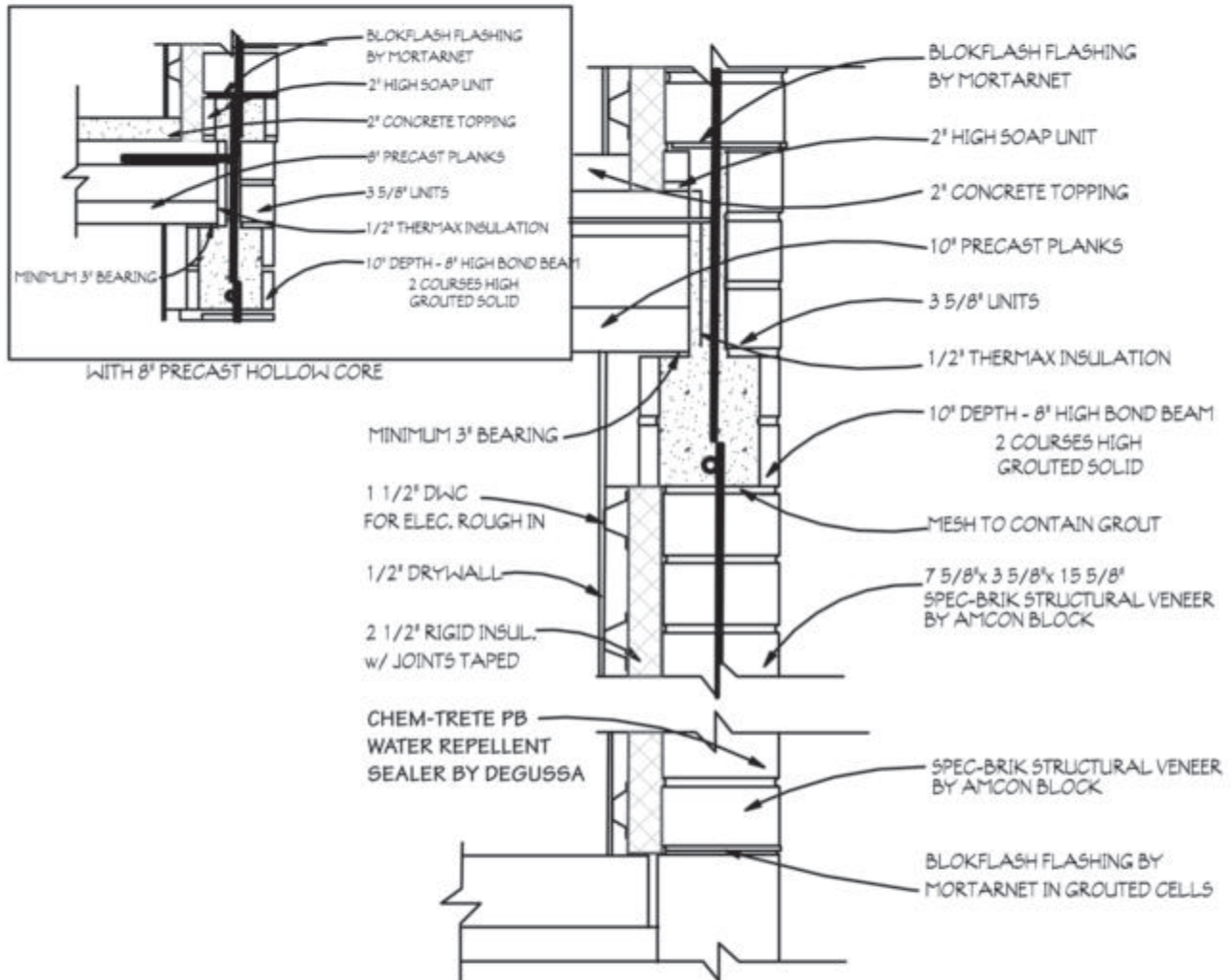
EXTERIOR BEARING WALL DETAIL - WOOD TRUSS FLOOR SYSTEM

BLOK-FLASH PRODUCT OVERVIEW

BLOK-FLASH[®] is an embeddable flashing device for exterior single wythe wall systems. It collects moisture that infiltrates the wall and flows down the ungrouted vertical cores and diverts it to the exterior with its positive water flow design. BLOK-FLASH is useful at all above-grade flashing/weep hole locations including base wall and above bond beam.



SPEC-BRIK SAMPLE DETAILS FOR SINGLE WYTHE WALLS



EXTERIOR BEARING WALL DETAIL - PRECAST HOLLOW CORE FLOORING